

# CHiLD POVERTY ACTION GROUP

---

## Contents

- Page 1. CPAG Whangarei
- Page 2. Events, Articles
- Page 3. Press Releases / Presentations/ Donations

---

## CPAG Whangarei

Earlier this year a branch of Child Poverty Action Group was formed in Whangarei. The branch has been very active in bringing attention to the plight of children in poverty, especially in the north. Earlier this year the branch was involved in a move– instigated by Chris Farrelly from the Manaia PHO- to launch an inquiry into the price of milk. This publicity led to a freeze in the price of milk. The increasing cases of rheumatic fever in the north were also brought to public attention by the branch.

In early April the group brought attention to their concerns with an event [Whangarei CPAG hangs out the dirty laundry of child poverty.](#)

This action led to a Radio NZ report which can be heard here:

[Activists sound alarm at Northland's growing child poverty](#)

---

## About CPAG

Child Poverty Action Group (CPAG) is a non-profit group formed in 1994, and made up of academics, researchers, practitioners and supporters. CPAG has a strong education and research role which enables it to contribute to better informed social policy to support children in Aotearoa New Zealand, specifically children who live in poverty. CPAG believes that our high rate of child poverty is not the result of economic necessity, but is due to policy neglect and a flawed ideological emphasis on economic incentives.

Through research, CPAG highlights the position of tens of thousands of New Zealand children, and promotes public policies that address the underlying causes of the poverty they live in.



## Events:

### *Post budget analysis*

---

This year CPAG was involved in four different functions with speakers analyzing the Budget. Breakfasts were held in Auckland and in Wellington (with the Public Health Association). The Whangarei branch of CPAG, with the support of the Manaia PHO, organised a lunchtime meeting. And, finally, CPAG joined with Anglican Action and the PSA at a presentation in Hamilton.

Presentations from all the above events can be accessed on our website here: [Post Budget Analysis](#)

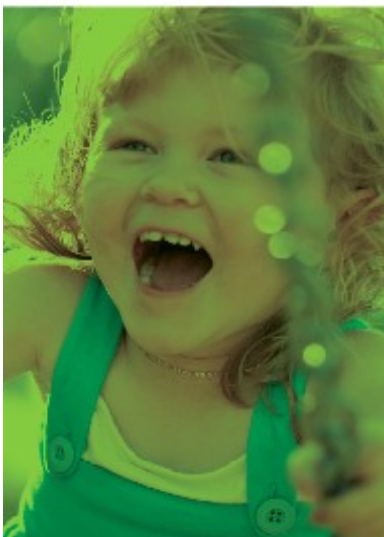
CPAG joined with the Retirement Policy and Research Centre in conjunction with the Public Policy Group, and The Department of Sociology at The University of Auckland to host a seminar on the **27th May**. *While New Zealand and Australia shared similar policy frameworks for much of their colonial histories, these paths began to diverge during the period of economic restructuring. We asked whether these policy differences are being entrenched, and what the implications of this are for both countries.* The main speaker was Dr Ben Spies-Butcher from MacQuarie University. The presentation can be accessed here: [Growing Apart or coming together?](#)



Post budget events in Wellington and Auckland

## Articles

---



### [\*The parallel universe of the Welfare Working Group\*](#)

In the above article, Donna Wynd and Susan St John find that the Welfare Working Group's final report, *Reducing Long Term Benefit Dependency*, 2011, is arguably one of the most unenlightened pieces of work ever to emerge from a government-funded taskforce. Most submissions were ignored, revealing that much of the consultation process was simply a public relations exercise.

### [\*Improving outcomes for children: which children?\*](#)

In this article Mike O'Brien reflects on the Working Welfare Group's report and reviews and reflects on the implications of the report for children living in poverty. Read this article which was published in the newsletter of the office of the Children's Commissioner.

## Articles Continued

---

### [Punitive policies hurting policies](#)

Our welfare and tax credit policies for supporting low income families are deeply contradictory and out of step with the nature of relationships and the labour market in the 21st century. In this article Susan St John comments on our complicated tax system

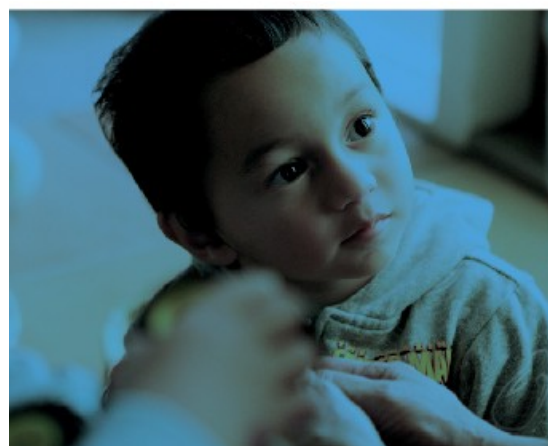
### [Child Poverty and child rights meet active citizenship](#)

In this article, Mike O'Brien and Tapio Salonen, draw on the experiences in New Zealand and Sweden to argue that an emphasis on active citizenship does not lead to an improvement in rights for children

## Press releases

---

- 11 April [Gift Tax ends for the rich and starts for the poor](#)
- 19 April [Not another discussion please Minister](#)
- 29 April [National slaps loan sharks with dead fish](#)
- 29 May [CPAG thanks Countdown for its contribution to children](#)
- 1 June [Ominous changes to Working for Families](#)
- 9 June [Prioritising children](#)



## Presentations

---

*CPAG members have been involved in the following presentations*

4 April. Devonport Rotary. Innes Asher and Julie Timmins

12 April. Public forum on government spending priorities (Peace Movement Aotearoa). Nikki Turner

10 May. Auckland University Nursing students. Julie Timmins

30 May. Paediatric Interest Group(Auckland Medical School) Presentations by Nick Fancourt, Vicki Carpenter and Janfrie Wakim

15 June. Talk to Auckland City Mission crisis team. Julie Timmins

20 and 21 June. Conferenz Welfare Conference. Mike O'Brien

## Donations

---

If you are not already supporting CPAG and you would like to make a donation to assist with ongoing work, please contact us at [admin@cpag.org.nz](mailto:admin@cpag.org.nz), or through our website: [www.cpag.org.nz](http://www.cpag.org.nz)

---

*“Our guiding principle is the right of every child in New Zealand to food, shelter, education and healthcare”* — Child Poverty Action Group

---